



PENTHOUSE A

3 BEDROOM
3.5 BATH
PRIVATE TERRACE

RESIDENCE FEATURES

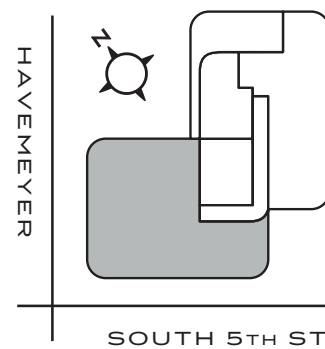
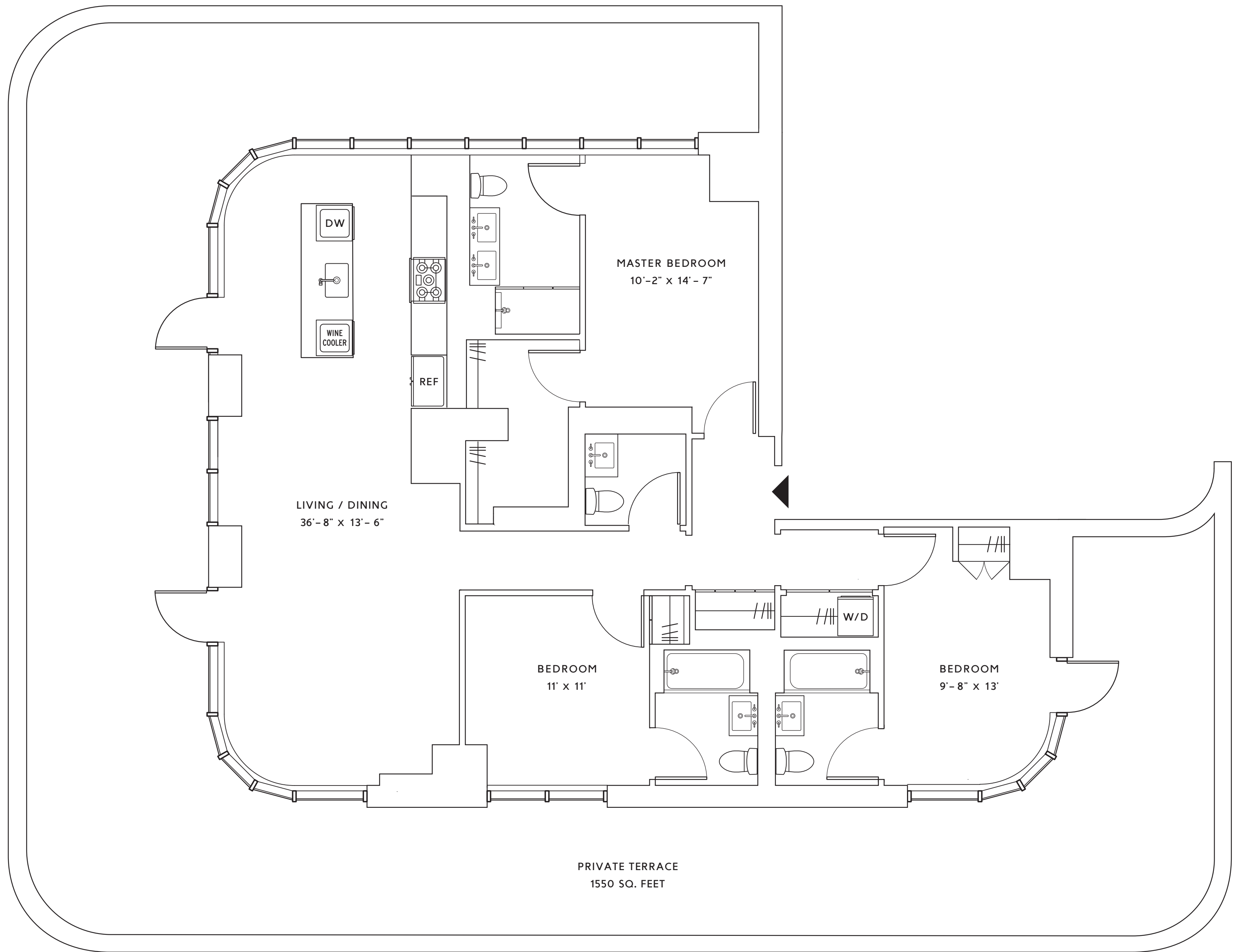
- Great Room with panoramic city views
- Keyless entry
- Wide plank flooring
- In-Unit Washer and Dryer

KITCHENS

- Custom Cabinetry
- White Caesarstone Countertops
- Full-height tiled backsplash
- Integrated European appliance package
- Smooth-top electric cook-top
- Stainless steel electric wall oven
- Paneled refrigerator
- Paneled dishwasher

BATHROOMS

- Four fixture master bath
- Full length mirrored medicine cabinets
- Oversized vanity mirror
- Glass enclosed walk-in showers
- Full height tiled walls
- Powder Room



275 SOUTH 5TH ST. WILLIAMSBURG, BROOKLYN - THEDIME.COM - RESIDENCES@THEDIME.COM - 718-599-DIME



All dimensions are approximate and subject to construction changes and omissions. Plans and dimensions may also contain minor variations from floor to floor.